

# Corporate Information

As of March 20, 2017

<b>Corporate Name</b>	YASKAWA Electric Corporation
<b>Founded</b>	July 16, 1915
<b>Employees</b>	Consolidated: 11,810 Non-consolidated: 2,741
<b>Head Office</b>	2-1 Kurosakishiroishi, Yahatanishi-ku, Kitakyushu 806-0004, Japan Phone +81-93-645-8801 Fax. +81-93-645-8831
<b>Tokyo Office</b>	New Pier Takeshiba South Tower, 1-16-1 Kaigan, Minato-ku, Tokyo 105-6891, Japan Phone +81-3-5402-4511 Fax. +81-3-5402-4580

<b>Sales Offices</b>	Chubu Office	Phone +81-561-36-9310 Fax. +81-561-36-9311
	Osaka Office	Phone +81-6-6346-4500 Fax. +81-6-6346-4555
	Kyushu Office	Phone +81-92-714-5331 Fax. +81-92-714-5799
<b>Plants</b>	Yahata-nishi Plant, Yukuhashi Plant, Iruma Plant, Nakama Plant, China (Shenyang, Changzhou, Shanghai)	
<b>Laboratories</b>	Corporate Research & Development Center (Kokura Plant), Tsukuba Research Laboratory	

## ○ Group Companies

### Japan

#### **YASKAWA ELECTRIC ENGINEERING CORPORATION**

Maintenance, test operation and adjustment of electric machines and facilities and technical training

#### **YASKAWA CONTROLS CO., LTD.**

Manufacturing and sales of electric machines, and parts

#### **YASKAWA MOTOR CORPORATION**

Design, manufacturing, sales and maintenance of motors, generators and motor applications

#### **YASKAWA MECHATREC CORPORATION**

Sales of electric machines and other machinery

#### **YE DATA INC.**

Information-related products and services (optomechatronics, information security and information multimedia)

#### **YASKAWA LOGISTEC CORPORATION**

General product distribution

#### **YASKAWA OBVIOUS COMMUNICATIONS INC.**

Public relations planning, advertisement and publications; producing catalogs and technical documents

### Europe

#### **YASKAWA EUROPE GmbH (Germany)**

Manufacturing, sales, and after-sales service of AC drives, servo motors and controllers.

Sales and after-sales service of robots

#### **YASKAWA NORDIC AB (Sweden)**

Sales and after-sales service of robots

#### **YASKAWA ELECTRIC UK LTD. (U.K.)**

Manufacturing, sales, and after-sales service of AC drives and servo amplifiers

#### **YASKAWA EUROPE TECHNOLOGY LTD. (Israel)**

Development, manufacturing, sales, and after-sales service of servo motors and controllers. Sales and after-sales service of robots

### Asia

#### **YASKAWA ELECTRIC (CHINA) CO., LTD. (China)**

Sales and after-sales service of AC drives, servo motors and controllers

#### **YASKAWA ELECTRIC KOREA CORPORATION (Korea)**

Sales and after-sales service of AC drives, servo motors, controllers and robots

#### **YASKAWA ELECTRIC (SINGAPORE) PTE. LTD. (Singapore)**

Sales and after-sales service of AC drives, servo motors, controllers and robots

#### **SHANGHAI YASKAWA DRIVE CO., LTD. (China)**

Manufacturing and sales of AC drives

#### **YASKAWA ELECTRIC TAIWAN CORPORATION (Taiwan)**

Sales and after-sales service of AC drives, servo motors, controllers and robots

#### **YASKAWA ELECTRIC (SHENYANG) CO., LTD. (China)**

Manufacturing, sales, and after-sales service of servo motors and controllers

#### **YASKAWA SHOUGANG ROBOT CO., LTD. (China)**

Sales and after-sales service of robots

#### **YASKAWA ELECTRIC INDIA PVT. LTD. (India)**

Manufacturing and sales of AC drives. Sales and after-sales service of robots

### The Americas

#### **YASKAWA AMERICA, INC. (U.S.A.)**

Manufacturing, sales, and after-sales service of AC drives, servo motors and controllers. Sales and after-sales service of robots

#### **YASKAWA ELETRICO DO BRASIL LTDA. (Brazil)**

Sales and after-sales service of AC drives, servo motors and controllers

#### **YASKAWA CANADA, INC. (Canada)**

Sales and after-sales service of AC drives, servo motors, controllers and robots

#### **YASKAWA MEXICO S.A. DE C.V. (Mexico)**

Sales and after-sales service of robots

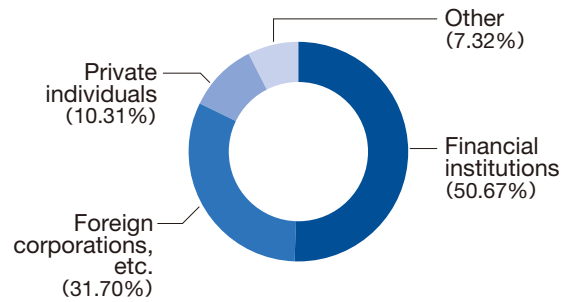


# Stock Information

As of March 20, 2017

Number of Authorized Shares ····· 560,000 thousand  
 Number of Shares Outstanding ····· 266,690 thousand  
 Capital Stock ··········· 30,562 million yen  
 Number of Shareholders ······· 27,569  
 Securities Code ··········· 6506(Japan)

## ○ Share Distribution by Shareholder Type

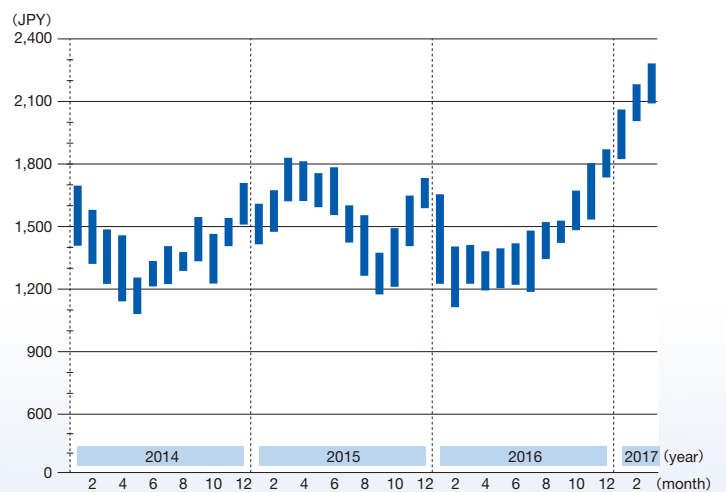


## ○ Major Shareholders

Major shareholders (Top 10 shareholders)	Number of shares (1,000s)	Shareholding ratio
Japan Trustee Services Bank, Ltd. (Trust Account)	23,920	8.97%
The Master Trust Bank of Japan, Ltd. (Trust Account)	23,572	8.84%
Mizuho Bank, Ltd. (MHBK)	8,100	3.04%
Japan Trustee Services Bank, Ltd. (Sumitomo Mitsui Trust Bank, Limited (Employee Retirement Benefit Trust Account))	7,970	2.99%
Meiji Yasuda Life Insurance Company	7,774	2.92%
THE BANK OF NEW YORK, NON-TREATY JASDEC ACCOUNT	6,485	2.43%
Japan Trustee Services Bank, Ltd. (Sumitomo Mitsui Trust Bank, Limited Re-trust Account, The Bank of Fukuoka, Ltd. Employee Retirement Benefit Trust Account)	6,375	2.39%
SAJAP	4,623	1.73%
Japan Trustee Services Bank, Ltd. (Trust Account 5)	4,258	1.60%
Trust & Custody Service Bank Ltd. (Securities Investment Trust Account)	4,228	1.59%

Note: Treasury stock is deducted in the calculation of the shareholding ratio.

## ○ Company Share Price (From January 2014 to March 2017)



Note: The prices displayed are the monthly high and low prices traded at Tokyo Stock Exchange.

The Company's stock has been selected for the Nikkei Stock Average and the JPX-Nikkei Index 400.

